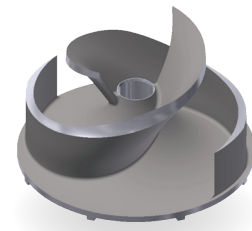




S150M



Specification

Capacity	m ³ /h	720
Total Head	m	70
Max. Solids Size	mm	76
Self Priming Lift	m	8.8
Air Handling	l/s	24
Selprime, Absorbs	kW	2.2
Power Required	kW	95
Pump Speed Max.	rpm	2000
Pump Speed Min.	rpm	1800
Impeller Type	Semi Open	
Impeller Blades	2	
Impeller Dia.	mm	340
Inlet Port	mm	DN 200 PN10
Outlet Port	mm	DN 150 PN10
Fuel Tank Capacity	ltrs	440 skid 400 Super Silent
Fuel Consumption BEP	lt/hr	18.5 - 24

TBA - To be advised.

Priming Method



The unique original Selwood self priming system utilising a water tolerant diaphragm air pump. An environmentally friendly design that has none of the problems of oil vapour emissions and oil emulsification associated with other priming systems.

Pump Materials

Pump Casing	SG Iron 500/7
Impeller	Stainless Steel 316
Wear Plates	Stainless Steel 316
Shaft	Stainless Steel 431
NRV Body	Cast Iron Grade 220
Mechanical Seal	Silicon Carbide v Silicon Carbide
Pump End Bearing	Taper Roller
Drive End Bearing	Taper Roller

Prime Movers

Diesel Engines	Perkins 1104-E44TA Cat C4.4
Electric motors available	

Standard Weights & Measures

Skid *	Length	260 cm
	Width	127 cm
	Height	160 cm
	Dry Weight	2000 kg
	Gross Weight	2374 kg
	LWA	118

(Pt No. 1513171000)

Super Silent	Length	300 cm
	Width	140 cm
	Height	218 cm
	Dry Weight	3150 kg
	Gross Weight	3490 kg
	LWA	TBA
	db(A)@ 7m	TBA

* Open sets exclude fittings

Optional Extras

- Auto stop-start controls
- Telemetry system
- Oil drain service kit
- Chalwyn valve spark arrester

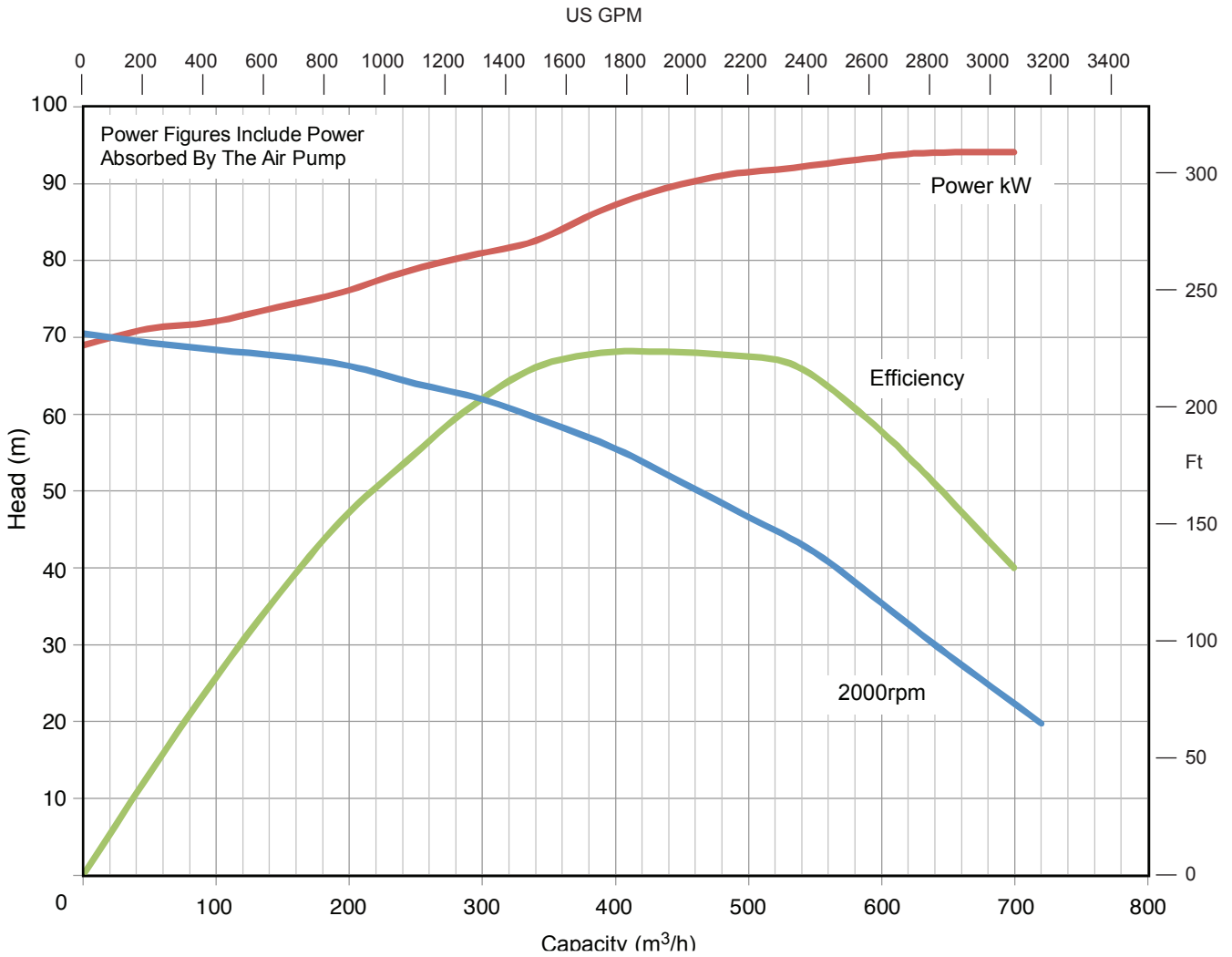


Johannesburg 011 609 4130
Cape Town 021 534 3431
Durban 031 700 5636
Port Elizabeth 041 451 1577



Performance Curve

S150M



www.iandickie.co.za

Johannesburg 011 609 4130
 Cape Town 021 534 3431
 Durban 031 700 5636
 Port Elizabeth 041 451 1577

